

THEATRE ARTISTS WORKSHOP



Creativity Sparks Here

FALL FESTIVAL OF NEW WORKS

A BENEFIT PRODUCTION
CELEBRATING 40 YEARS!

OCTOBER 7 AND 8, 2023

WESTPORT TOWN HALL
110 MYRTLE AVE. WESTPORT, CT



A.M. Bhatt



Jacqueline Brown



Molly Garbe Brown



Chelsea Carpenter



Barbara Distinti



Linde Gibb



Larry Greeley



Andrea Lynn Green



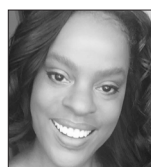
Sean Hannon



Susan Jacobson



Nina Mansfield



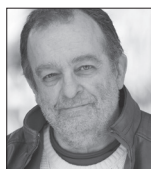
Lisa McCree



Dan Remmes



Emilie Roberts



Jack Rushen



Elizabeth Simmons



Vivian Sorvall



Kimberly Squires



Laura Warfield



Kimberly Wilson



Lawrence Winslow

the
Theatre Artists Workshop
presents its

FALL FESTIVAL OF NEW WORKS

A BENEFIT PRODUCTION
CELEBRATING 40 YEARS!

Production Stage Manager
Justice Smith

Technical Director
Dave Rylander

Sound Design
Andrea Lynn Green

Program Design
Dan Remmes

Sponsored by
Westport Community Theatre

ABOUT THE FESTIVAL

Over four decades, the **Theatre Artists Workshop of Westport** has been a place where professional actors, writers and directors bring work to be evaluated by their accomplished peers in a nurturing environment—a developmental space where artists are free to take risks. Presentations to members might include a scene from a full-length play in development, a freshly-choreographed dance, a song in rehearsal, or a 5-minute playlet bourned from a “word of the week” challenge. In this annual festival, we pull back the curtain on this process, offering the public a glimpse at the eclectic work members have the privilege to witness at any given meeting.

Enjoy!

Recommended for ages 14+

Recording or photography during the show is strictly prohibited.

ACT I

BORK & ODIL

written by
Vivian Sorvall

directed by
Andrea Lynn Green

Bork Dan Remmes*
Odil Barbara Distinti*

THE ENVIRONMENTALIST

written and directed by
Andrea Lynn Green

Lt. Norris Chelsea Carpenter
Beverly Linde Gibb*
Marvin Larry Greeley
Erda Andrea Lynn Green*

THE WALTZ

written by
Dorothy Parker

adapted and performed by
Susan Jacobson

SNACK TIME

written by
Nina Mansfield

directed by
Molly Garbe Brown

Karen Kimberly Squires*
Liz Elizabeth Simmons*

PAINADDA SONADDA

written by
Lisa McCree

directed by
Andrea Lynn Green & Susan Jacobson

Pain-tha Son-natta Kimberly Wilson

There will be one 10-minute intermission.

ACT II

WELCOME BACK

written and directed by
Dan Remmes

Therapist Laura Warfield*
Patient Molly Garbe Brown

LORD HAVE MERCY

written by
Laura Warfield

directed by
Susan Jacobson

Setting: Fanelli's Bar on the corner of Mercer & Prince Streets

Lucy Emilie Roberts*

IN THE BEGINNING

written by
Jack Rushen

directed by
Susan Jacobson

The Boss A.M. Bhatt
Chief of Staff Sean Hannon*

THE ARTIFACT

written by
Lisa McCree

directed by
Andrea Lynn Green & Susan Jacobson

Scene 1: Dr. Churchville's University Office

Scene 2: Two Weeks Later

Dr. Winston Churchville Lawrence Winslow*
Ellie Singleton Jacqueline Brown



This Actor appears through the courtesy of **Actors' Equity Association, the Union of Professional Actors and Stage Managers in the United States.*

WHO'S WHO

A.M. BHATT. "... and then, I have nature and art and poetry and literature—and if that is not enough, what is enough?" —Vincent Van Gogh. A.M. Bhatt is a lifelong artist. He is the Founder of DAE (a nonprofit school with campuses in New Haven and Stamford) and runs a M.A. in Leadership program that is grounded in the premise that leadership is an art form—a unique, one-time, individual expression. a.m. has developed LeaderArtists in companies such as IBM, AmEx, and Facebook as well as non-profit and social impact agencies and start-ups. He is a published photographer, international public speaker, children's book author, and stage actor. Plays he has performed in include: *Disgraced*, *Other People's Money*, *Frost/Nixon*, *One Flew Over the Cuckoo's Nest* and *Prescription Murder*.

JAQUELINE BROWN. University-trained Actress Jacque Brown has been a part of theater since a young age. She's played roles from Shakespeare, Lorraine Hansbury, August Wilson, Ntozake Shange, Sharece M. Sellem, Joy Harris, and A.K. Payne. Jacque's pursuit of acting has landed her on stages in CT, NY, and film sets in ATL. She is an excellent director, producer, and writer. She enjoys doing yoga, and spending time outside with nature, with God. She looks forward to her future working as an award winning artist and adding her name to the list of greatest of all time.

CHELSEA CARPENTER is delighted to be joining TAW for the *Fall Festival of New Works*. After getting her start in audiobooks and voice over—where she works with clients ranging from Amazon and LinkedIn, to Dior and Lockheed Martin—Carpenter quickly entered the theatre and on-camera world, becoming a regular face on mid-west TV commercials and short films. She played the role of Jeannine in the film *Paranauts*, and joined TAW's production of *Bushwhacked! And Other Short Plays* earlier this year as Holly in *The Coupling Institute*.

MOLLY GARBE BROWN. Excited to be wearing many hats to bring the Fall Festival to life! Nat'l Tour: *Little Women The Musical*. Re-

gional credits include: *Doubt: A Parable* (Sister James/Stray Kats and Third Eye Prod's), *The Marvelous Wonderettes* (Betty Jean/Lake Ontario Playhouse), *Parade* (Mary Phagan/Secret Theatre, NYC). Many children's theatre productions in CT and Westchester County including originating the role of Merrilee Mannerly in *Merrilee Mannerly The Musical* at The Summer Theatre of New Canaan. Independent Film: *Local Warming* (Brooklawn Productions). Many thanks to my husband Will and our 3 boys.

BARBARA DISTINTI. *Little Mermaid*, *Footloose*, *Bye Bye Birdie*, *West Side Story*, *South Pacific* (New Paradigm Theatre), *It's a Wonderful Life* (Stray Kats), Hollywood Improv and studied at The Groundlings. MFA Theatre, University of Pittsburgh, and SAG-AFTRA member. Barbara directed *House of Fury*, *A Coming Out Homecoming* with Connecticut FilmWorks. She currently teaches theater at Sacred Heart Greenwich.

LINDE GIBB is a SAG/AFTRA and AEA member. Her several television credits include *Friends*, *Party of Five*, *General Hospital*, *Third Rock from the Sun* with John Lithgow, and *Prime Time Glick* with Martin Short. Among her many theatre credits are *Nicolas Nickleby*, *Mornings at Seven*, *Broadway Bound*, *Harold and Maude*, *Beyond Therapy* and *Come Back to the Five and Dime*, *Jimmy Dean*, *Jimmy Dean*, and musicals *Damn Yankees*, *Guys and Dolls*, *No No Nanette* and her favorite as Jack's mother in *Into the Woods*. She is also professional dancer and AGMA member, and was the director of Westport Dance Center for fifteen years.

LARRY GREELEY is a longtime member of TAW and has had more than 100 Principal roles in plays performed in CT & NYC as well as appearances in several motion pictures, numerous commercials, radio, TV and even Opera. He is a proud member of SAG/AFTRA.

ANDREA LYNN GREEN. Broadway: *Who's Afraid of Virginia Woolf?* directed by Joe Mantello. Select Off Broadway: *The Butcher Boy*, *The Home Place* (Irish Rep), Harrison, TX:

WHO'S WHO

Three Plays by Horton Foote (Primary Stages), *Rocket Science* (Playwrights Horizons). Select regional: *The Glass Menagerie* (Weston Theatre Company & Gulfshore Playhouse), *Vanya and Sonia and Masha and Spike* (Hartford Stage), *Giant* (Dallas Theatre Center), *Lucy* (Delaware Theatre Company), *Anne & Emmett* (Ford's Theatre/Atlas Lang), *Steel Magnolias*, *Cat on a Hot Tin Roof* (CCC Outstanding Lead Actress nomination) at MTC. Select TV/Film: *Crashing*, *The Mysteries of Laura*, *Elementary*, *The Carrie Diaries*, *Exposed*, *The Super*, *The Renovation*.

SEAN HANNON. A founding member of Will Geer's Theatrum Botanicum, Sean played the juvenile lead in many Shakespeare plays, and also played George Gibbs in *Our Town* with Richard Dysart and Dana Elcar. Off-Broadway, he appeared in the lead role of Charlie Gallo-way in *Life Anonymous* by N. Richard Nash. Regionally, at CT's Summer Theater of New Canaan he's played Captain Von Trapp in *The Sound of Music*, Captain Hook in *Peter Pan*, and King Arthur in *Camelot*. He was most recently seen as Mayor Jorgenson in Rosemary Foley's *Bushwhacked!* at the Greenwich Theatre Company. Sean was a two-time contestant and one-time winner on the storied *The Gong Show* with Chuck Barris.

SUSAN JACOBSON recently performed in *Bushwhacked!* at GTC and in *Imprint*, *Preceived*, *No Ordinary Mother* and *The Mama and Papa* at the National Opera Center in NYC. Her monologues have been broadcast on WPKN and she enjoys performing with Play with Your Food, LPTW, and the Legacy Theatre. Her video, *Broken*, looped at the People, Politics and Planet Exhibition and her one-person show, *Collecting Driftwood*, received a United Solo Award for Best Physical Theater. Favorite roles include Sister Aloysius (*Doubt*), Cousin (*Christmas Memories*), and Eleanor. Her choreography and performance in *Letting Go* premiered at Lincoln Center's Dance on Camera Festival.

NINA MANSFIELD. Nina's ten-minute and one-act plays have had over 100 productions throughout the United States and international-

ly. Her plays are published by Smith & Kraus, YouthPLAYS, Original Works Publishing, Stage Partners, and One Act Play Depot. Nina's short mystery fiction has appeared in various publications including *Ellery Queen Mystery Magazine* and *Alfred Hitchcock's Mystery Magazine*. Nina is a member of The Dramatists Guild, Society of Children's Book Writers and Illustrators, The Mystery Writers of America, International Thriller Writers, Theatre Artists Workshop, and she is co-President of the NY/Tri-State Chapter of Sisters in Crime.

LISA McCREE. Commissioned works include *Mecca is Burning* (PENNLIVEARTS, University of Pennsylvania & Negro Ensemble Company); *The Miserable Matter of Slavery* (Sea Island Nightmare) *The Medicine Show* (N.Y. Asylum Down) *The Spirited Actor* (Word Warriors) Matt McCoy Hottest Poets, Da Stuff-Russel Simmons Def Comedy Jam Rob Stapleton, *The Marriage Counselor & The Engagement Party* (IMDb) Panther Productions, MOP music video, Promotional Video for NTFE (Network for Teaching Entrepreneurship) *The Interrogation* aired on Viasat1 (Ghana, Accra) The Collective, Pierre Cardin Commercial, collaboration Ricardo Cortes *Go the Fok to Sleep w/ Samuel L. Jackson*, Alonia Deathdimona Cornrow a mature poetry book, Clariden Entertainment cable series *G-Spot Chronicles* based on Ocean Kane's hit series *Real Sex*, several music video works with Hush Productions, M.T.V/ VH1, Lenny Kravitz music video.

DAN REMMES. As a writer, Dan's work has featured Emmy-, Tony- and Oscar-winning actors with productions in the US, UK, Canada and The White House. Plays include *Grumpy Old Men: The Musical* (running nationwide; licensing TRW), *Three Tables* (Sam French winner; pub/license Concord Theatricals), *What Doesn't Kill Us*, *Night Out* and many others, plus multiple screenplay options and short films. Awards include HBO New Writers, NY Foundation for the Arts Fellowship, Final Draft Big Break, Sundance Film Lab and more. Actor: Stages from coast-to-coast, most recently *Annie* and *Newsies* at Westport Country Playhouse and *Leaving*

WHO'S WHO

Her at Greenwich Theatre Company. TV: *Law & Order SVU/Criminal Intent, Conviction, Blind Justice Late Night with Conan O'Brien*. Wrote, directed and starred in the award-winning web series, *Covid Couple*. DanRemmes.com

EMILY ROBERTS. In NYC, Emilie starred in five original musicals. Regionally, she had leading roles in *The Respectful Prostitute, She Loves Me, The Robber Bridegroom, Oklahoma!* and others, appeared in eight musicals at Summer Theatre of New Canaan, and played in dozens of musical revues. A graduate of the Juilliard School, Emilie performed such operas as *The Magic Flute, La Juive*, and *Pagliacci*. She is an accomplished choral singer and has recorded with Naxos and Columbia. Emilie is Adjunct Professor of Music at the University of Bridgeport, a member of NATS, AEA, and SAG, and past president of the Theatre Artist's Workshop.

JACK RUSHEN is a two-time winner in the Julie Harris Playwriting Competition for his plays *Image* and *Taming the Lion*. He has also won a Standing Ovation Award for his short play, *Testimonial*, consequently published in *The Best Short Plays of 2019*. *Taming the Lion* was featured recently in development at the Berkshire Theatre Festival and was produced at Theatre40 in Beverly Hills. *Image* was mentored in development at top theatres across the country, including Emerging Artists in New York City, Theatre 40 in Los Angeles, Wordsmyth in Houston, Artemesia in Chicago, Centre Stage in South Carolina, and Penguin Rep in Westchester.

ELIZABETH SIMMONS lives in Harrison, NY has performed across the country in plays, musicals, and film/tv. She was previously nominated for a NY Innovative Theatre Award for her two woman show *David's RedHaired Death*. Select regional credits: *Sexy Laundry* (Millbrook Playhouse), *The Diary of Anne Frank* (Playhouse on Park), *To Kill A Mockingbird* (Queen's Theatre) *Brighton Beach Memoirs* (Broward Stage Door Theatre) BFA Acting Point Park University/Pittsburgh Playhouse. MS Ed. Theatre CUNY City College of New York. www.elizabethsimmons.net

VIVIAN SORVALL writes short plays, long plays, screenplays, and short stories. Her full-length *Strindberg's Dollhouse*, developed at Theatre Artists Workshop, received a stage reading at NYC's National Arts Club, and made the semi-finals in the O'Neill Theatre Conference. Short plays include *The Man Upstairs, Punch and Judy Revisited, 'Twas, Glitch, Hums*, and *Trio Asphodel*. She is a member of the Dramatists Guild as well as TAW.

KIMBERLY SQUIRES. Last month, Kim was seen at the Ivoryton Playhouse in *Staged Intent*. Off-Off Broadway: *Winnie, Summer Cabin*. National Arts Club NYC: *Rachel, The Girl In The Red Dress*. NYC Players Club: *Susanna, The Lives of Shakespeare*. Yale Rep: *Ivanov*. Long Wharf: *Delightful, Dearly Departed*. Music Theatre of CT: *Flo, The Committee*. Greenwich Theatre Co: *Carol, The Coupling Institute; Bea, The Beekeeper; Elise, The Difference*. The Palace Theatre: *Caroline, Joy Meets World*. Kim has also worked on the west coast where she met her husband. Their 2-person show, *Zeller & Squires*, has been produced at the Legacy Theatre in Branford, CT & the Lyric Hall in New Haven. BFA in Acting from UConn. Member: AEA; SAG-AFTRA; CT LPTW & TAW.

LAWRENCE WINSLOW. A native New Yorker, Lawrence has been acting for more than 30 years. Lawrence has worked on local NY episodes, *FBI, The BlackList, Bull, Law and Order* franchise. He has appeared in various national commercials for McDonalds, Visa, and Universal Theme Parks and voiceovers. Lawrence has worked in theatre from classical to contemporary drama and comedy. He is currently writing a comedy series, *Confessions of a Serial Dater* with plans for production and is listed as an associate producer for the award winning series: *12 Steps to Recovery*, a comedy about dating.

LAURA WARFIELD is a seasoned actress and singer-songwriter. Her favorite Equity roles include M'Lynn in *Steel Magnolias*, Maggie in *Cat on a Hot Tin Roof*, Doris in *Owl and the Pussycat* and Adelaide in *Guys and Dolls*. With an M.F.A. from Columbia School of the

WHO'S WHO

Arts, some of the venues she has performed at include The New York Shakespeare Festival, The Public Theatre, the Goodman Theatre and the Westbury Music Fair. With her trio, Warfield Suite, she as performed her music at The New Haven Folk Festival, the Levitt Pavillion and the Bitter End to name a few. Her four CD's of original songs can be heard on Spotify, Amazon and Youtube. Thank you Dan and TAW fo this opportunity!

KIMBERLY WILSON pursued theater while in high school, studying and performing at the Minneapolis Children's Theatre. She also was a founding member of Mixed Blood Theatre. Kimberly studied Fine Arts at Howard University in Washington, D.C. After college she performed in national TV commercials, stage and touring productions notably *Aint Misbehavin, For Colored Girls, Glory Road, A Civil War Christmas*, and *Ragtime The Musical*. In 2016, Kimberly Wilson's *A Journey Musical One-Woman Show* was awarded the Best Playwright Award at the Atlanta Black Theatre Festival. A former Theatre Artists Workshop member, Kimberly is honored to present Lisa McCree's *Painadda Sonadda*.

JUSTICE SMITH (*Stage Manager*) has assistant stage-managed *Curse of the Werewolf, Home on the Morning Train*, and *An Evening of Theater* (all at Mertens Theater). She is a professional Scenic Carpenter and has built *Frozen, Camelot, Beetlejuice*, and *Back to the Future*, all for Broadway productions, as well as *Frozen*, the national tour, and many others. She would like to thank her parents for always being there for her, her friends for always supporting her, and Ian McDonald for introducing her to the world of technical theater and helping her reach where she is now.

DAVE RYLANDER (*Technical Director*) has been in theatre for 15 years and technical director for the Westport Community Theater for the last eight, performing all kinds of technical work.

Theatre Artists Workshop

wishes to express its
gratitude to the
Performers' Unions:



SAG-AFTRA



American Guild of Variety Artists

through
Theatre Authority, Inc.
for their cooperation in
permitting the Artists
to appear in this
fundraising production.

ACKNOWLEDGMENTS

WESTPORT COMMUNITY THEATRE

Theatre Artists Workshop
would like to thank the
*Westport Community
Theatre* for their generous
support in sponsoring
our 40th Anniversary
production. We couldn't
have done it without you.

A very special thank-you to our ongoing partners,
Westport Country Playhouse
and

Connecticut State Community College at Housatonic
for providing us with home bases so we can focus
on the work and making magic happen on stage.

WESTPORT COUNTRY PLAYHOUSE

CT STATE
COMMUNITY COLLEGE
Housatonic



ACKNOWLEDGMENTS

THEATRE ARTISTS WORKSHOP

is a non-profit 501(c) organization
and offers its gratitude to:

Connecticut[®]

Department of Economic and
Community Development

Office Of The Arts

cThumanities

for their generous support

Music Used in This Production

“Moonlight Hall,” “Marty Gots a Plan” & “The Show Must Be Go”

by **Kevin MacLeod**

Licensed under Creative Commons:
By Attribution 3.0
creativecommons.org/licenses/by/3.0/

INCOMPETECH

incompetech.com

“Rise Up”

performed by **Andra Day**

(*Cheers To The Fall*) WMG (on
behalf of Warner Records Label);
Abramus Digital, ARESA, MINT_
BMG, LatinAutorPerf, LatinAutor,
BMG Rights Management (US),
LLC, ASCAP, CMRRA, and 14
Music Rights Societies

“Mirrors”

by **Bryan Garbe (CASTOFF)**

“The Artists Life”

Alan Dynin and Walter Parks

The Waltzes

Live at Split Tree Farm Studio



THEATRE ARTISTS WORKSHOP



Proceeds from this production benefit the
THEATRE ARTISTS WORKSHOP OF WESTPORT, INC.
a non-profit theatre arts organization celebrating its
40th YEAR as a workshop for professional **actors, writers**
and **directors** to experiment and develop new work.

Plays developed at The Workshop have gone to
BROADWAY, OFF-BROADWAY, REGIONAL and
INTERNATIONAL PRODUCTIONS.

The Workshop was founded in 1983 by Keir Dullea and
his wife, the late Susie Fuller. Its **membership legacy**
includes Phoebe Brand, Morton Da Costa, Theodore
Bikel, Sandy Dennis, Christopher Durang, June Havoc,
Susan Granger, Lucille Lortel, Shirley Knight, Ring
Lardner, Jr., James Noble, Brett Somers, Mia Dillon, and
James Mapes, among many more storied personalities.

Thank you for helping to support this legacy.

TAWorkshop.org

TheatreArtistsWorkshop@gmail.com

